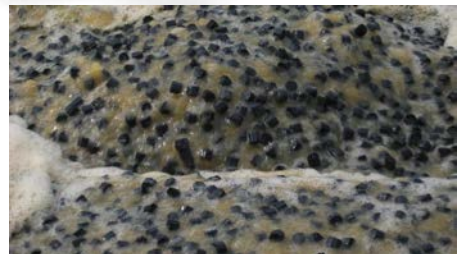




**BIOPARTS™ 600 & 900**  
**MBBR MEDIA**

**Material Features**

- High density polyethylene (HDPE) with carbon black added for UV protection
- High biologically active surface area
- Media size optimized for huge surface area while allowing for more coarse screening
- Energy Efficient Simple Treatment
- Ultra Low Footprint
- Reliable Intensive Treatment
- Compatible with multiple system types



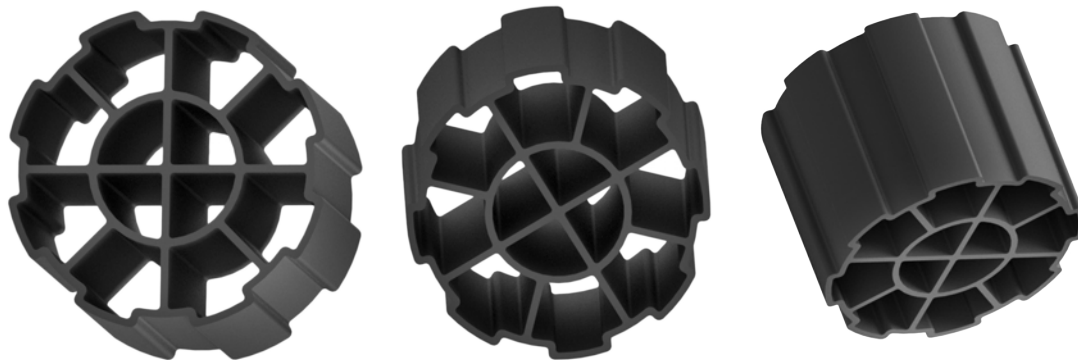
*technologies for cleaner water*

5 Burks Way · Winnipeg MB · R2J 3R8  
 +1 888 426 8180 • [www.nexom.com](http://www.nexom.com)

SS122-BI-05-21

	600-14		900-09	
	US	Metric	US	Metric
Outer Diameter	0.70 in	18 mm	0.67-0.78in	17-20 mm
Cylinder Length	0.55 in	14 mm	0.35 in	9 mm
Color	Carbon Black			
Material	High density polyethylene (HDPE) with carbon black added for UV protection			
Specific Gravity	0.96			
Biologically active surface area	179 ft <sup>2</sup> /ft <sup>3</sup>	589 m <sup>2</sup> /m <sup>3</sup>	287 ft <sup>2</sup> /ft <sup>3</sup>	942 m <sup>2</sup> /m <sup>3</sup>
Maximum Aerobic Fill capacity	67%			
Maximum Anoxic/ Anaerobic Fill Capacity	50%			

**Bioports 600**



**Bioports 900**

